

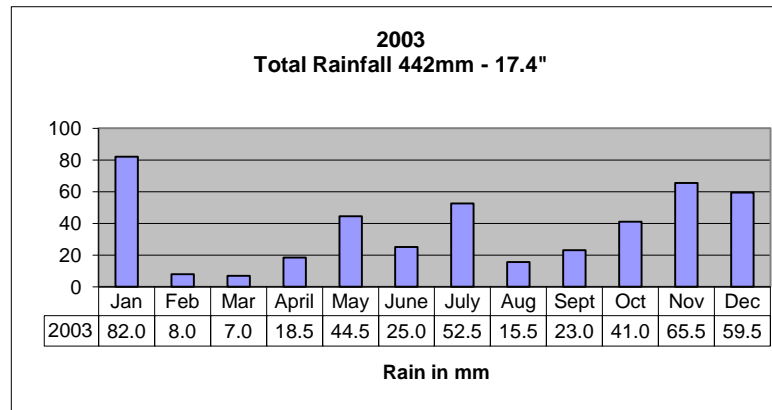
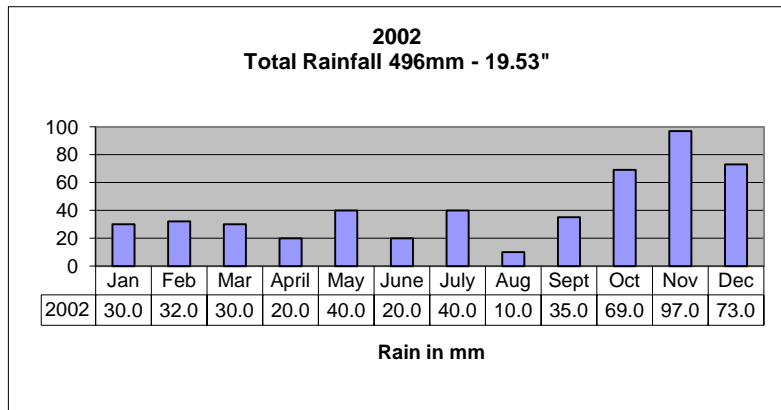
RAINFALL near ALDEBURGH ROAD, ALDRINGHAM

(This part of east Suffolk average annual rainfall 460 - 600mm (18 - 23.6"))

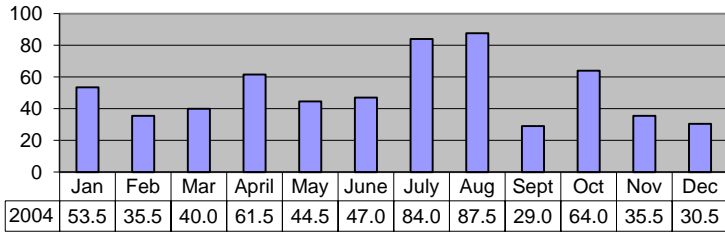
Hover over cells below with red corner tabs for comment in Excel.

	Jan	Feb	Mar	April	May	June	July	Aug	Sept	Oct	Nov	Dec	Total mm	Total Inches
2002	30.0	32.0	30.0	20.0	40.0	20.0	40.0	10.0	35.0	69.0	97.0	73.0	496.0	19.53
2003	82.0	8.0	7.0	18.5	44.5	25.0	52.5	15.5	23.0	41.0	65.5	59.5	442.0	17.40
2004	53.5	35.5	40.0	61.5	44.5	47.0	84.0	87.5	29.0	64.0	35.5	30.5	612.5	24.11
2005	30.0	55.0	34.5	42.5	52.5	21.0	74.5	75.5	70.5	70.5	28.0	39.5	594.0	23.39
2006	13.5	39.0	28.5	16.0	83.5	19.0	15.0	129.5	33.5	82.5	43.5	38.5	542.0	21.34
2007	49.0	69.5	34.5	0.0	129.5	87.5	110.5	63.5	47.0	49.0	52.5	29.0	721.5	28.41
2008	69.5	11.0	90.5	44.0	107.0	63.0	32.5	58.5	61.0	47.5	83.5	24.0	692.0	27.24
2009	46.5	58.5	35.0	6.0	39.0	36.0	88.5	11.5	9.5	37.5	106.5	99.5	574.0	22.60
2010	60	84	31.5	8.5	30.5	25	45.5	131	72	46.5	70.5	21	626.0	24.65
2011	63.0	34.0	5.5	2.5	15.0	85.0	60.0	57.0	12.3	29.5	21.5	76.5	461.8	18.18
2012	52.0	13.0	60.0	102.5	53.0	73.0	130.5	57.0	54.0	89.0	61.5	96.0	841.5	33.13
2013	44.5	36.0	79.0	19.0	38.5	31.0	18.0	33.5	42.5	112.5	58.0	60.5	573.0	22.56
2014	102.5	71.0	12.0	9.0	104.0	27.5	72.5	81.0	12.0	59.0	151.0	53.0	754.5	29.70
2015	28.0	43.0	23.5	15.5	52.0	14.5	85.5	83.5	64.5	45.0	52.5	42.5	550.0	21.65
2016	76.5	29.5	58.0	62.0	38.5	86.0	44.0	18.5	27.0	54.0	85.0	11.5	590.5	23.25

Annual Rainfall by Month graphs below for 2002 - 2015. Monthly and Annual Comparison tables follow.

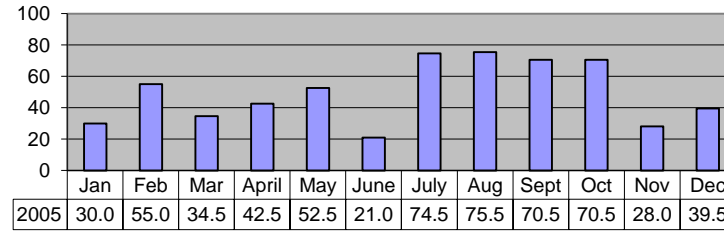


2004
Total Rainfall 612.5mm - 24.11"



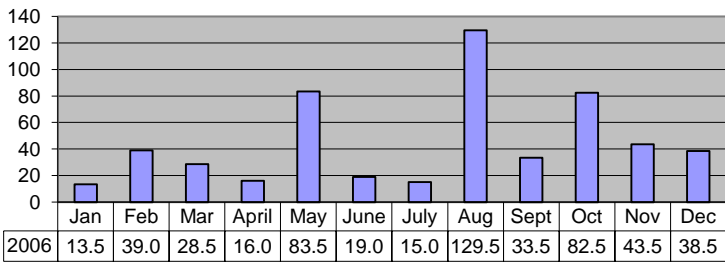
Rain in mm

2005
Total Rainfall 594mm - 23.39"



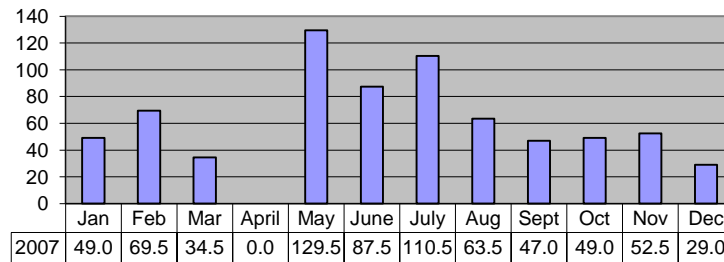
Rain in mm

2006
Total Rainfall 542mm - 21.34"



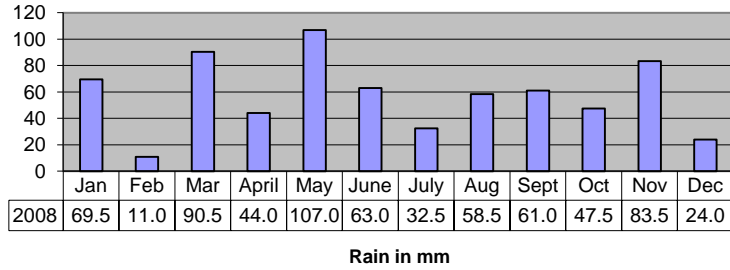
Rain in mm

2007
Total Rainfall 721mm - 28.41"

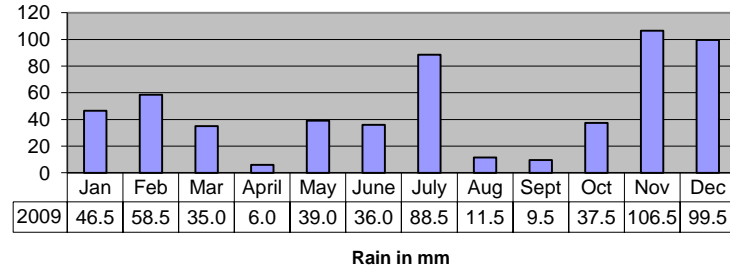


Rain in mm

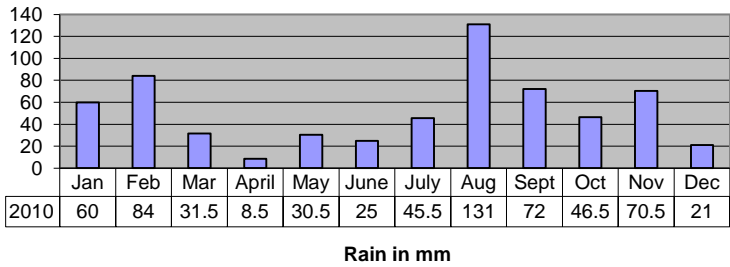
2008
Total Rainfall 841.5 mm - 27.24"



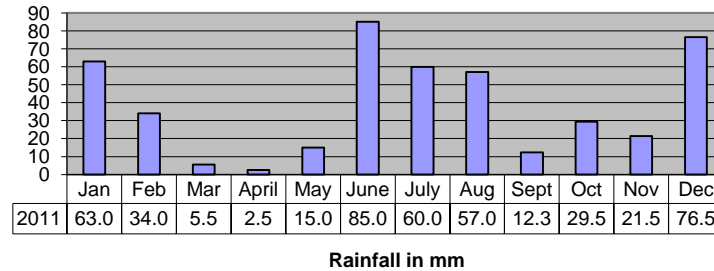
2009
Total Rainfall mm - 574mm - 22.6"



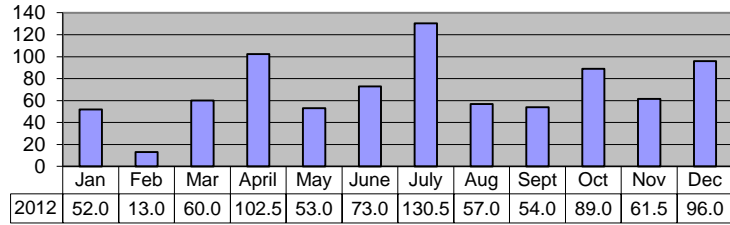
2010
Total Rainfall 626mm - 24.65"



2011
Rainfall 461.8mm - 18.18"

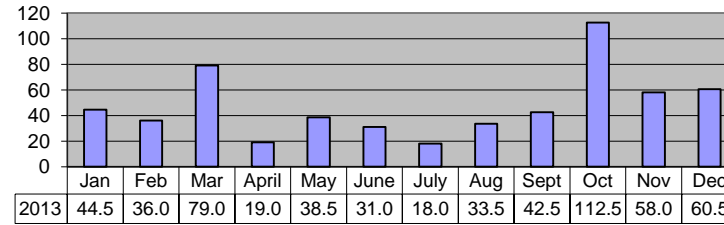


2012
Total Rainfall 841.5mm - 33.13"



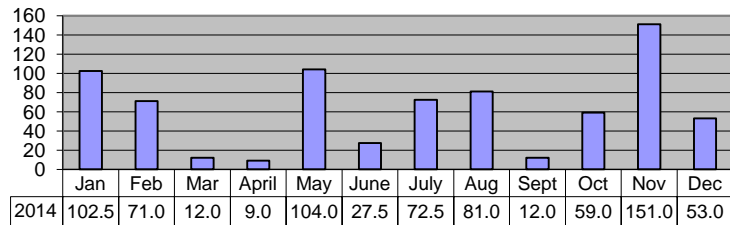
Rain in mm

2013
Total Rainfall 573mm - 22.56"



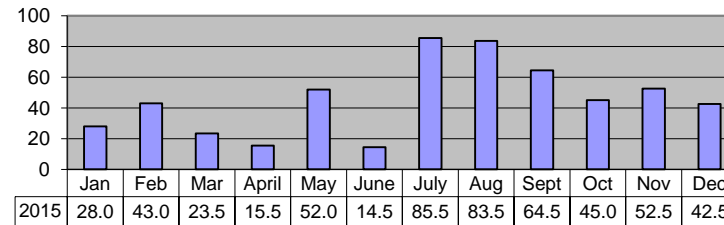
Rain in mm

2014
Total Rainfall 754.5mm - 29.7"



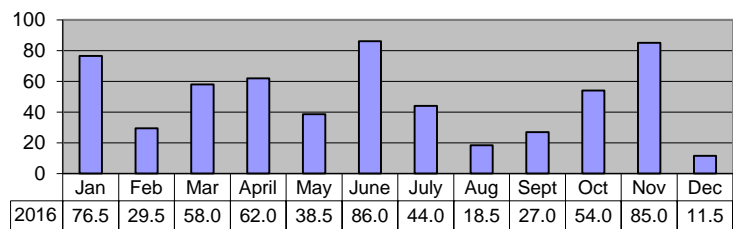
Rain in mm

2015
Total Rainfall 550mm - 21.65"



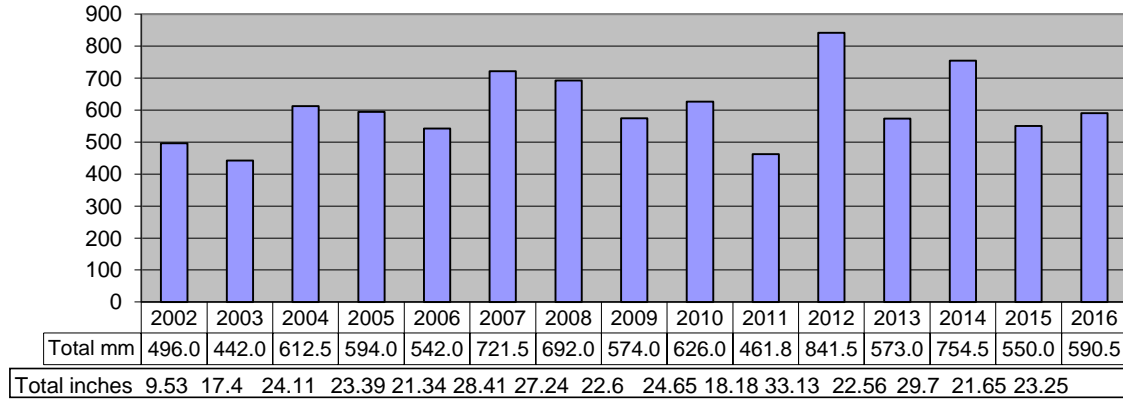
Rain in mm

2016
Total Rainfall 590.5mm - 23.25 "



Rain in mm

Annual Rainfall Comparison 2002 - 2016



This part of east Suffolk average annual rainfall 460 - 600mm (18 - 23.6")

Hover over bars below to see values (in Excel).

Monthly Rainfall Comparison 2002-2016 in mm

